

ATELIER A11 : Comprendre les rouages techniques de la mine

Session 2 : Impacts sanitaires et environnementaux

Forum PACTe – 8/10 septembre 2017
Mobilisations face aux impacts miniers

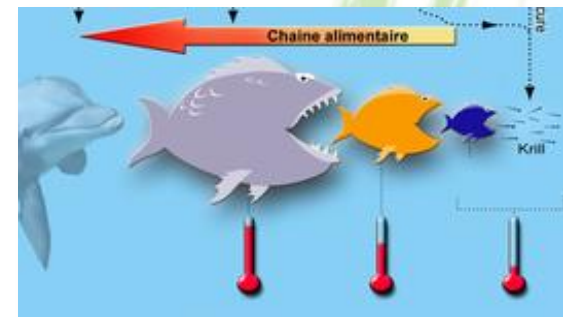
Sources, impacts, toxicité...

Source \neq Impact \neq Risque

Polluant \neq Toxique



© 2014 Paula Bronstein/Getty Images for Human Rights Watch



Principaux impacts environnementaux et sanitaires



Maladies
professionnelles



Contamination du
milieu de vie



Mise en péril des
eaux domestiques



Mise en péril des
ress. de subsistance



Dommages aux
écosystèmes



Atteinte à la
biodiversité



Pollution des sols



Pollution des eaux



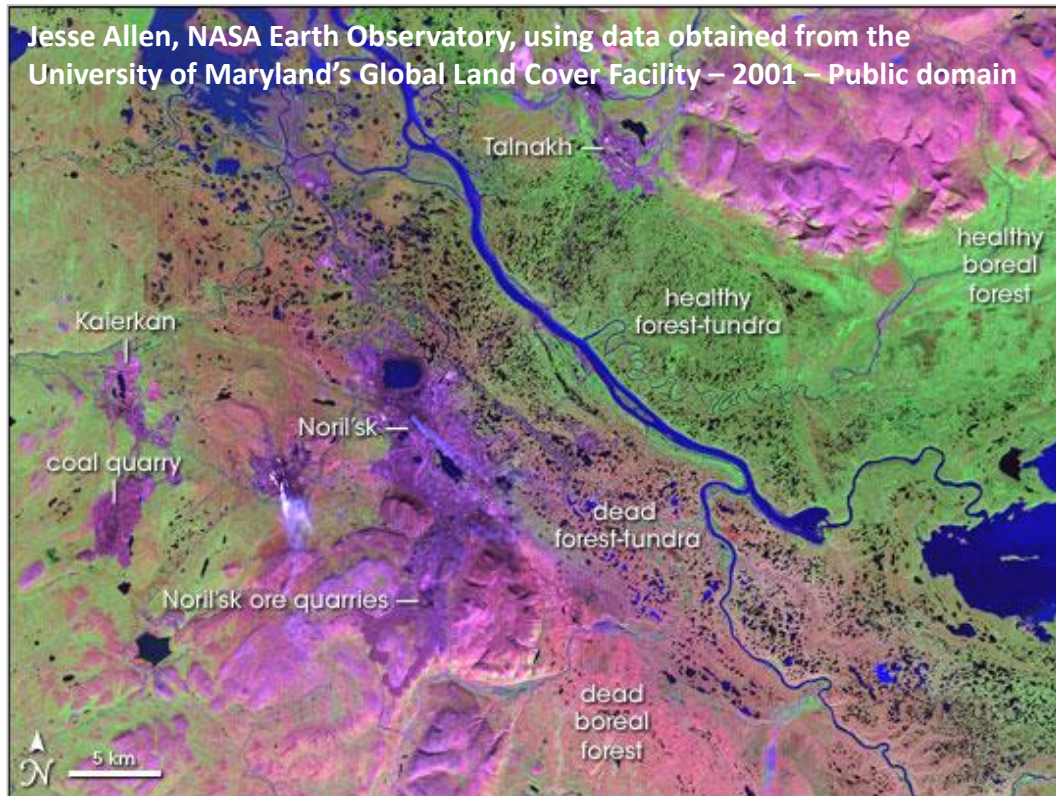
Pollution de l'air



Des pollutions diffuses et persistantes



Des pollutions diffuses et persistantes



La rivière Dal'dykan contaminée par une fuite sur le site de Norilsk en septembre 2016 / Source : l'express.fr

Des pollutions diffuses et persistantes



Des pollutions diffuses et persistantes

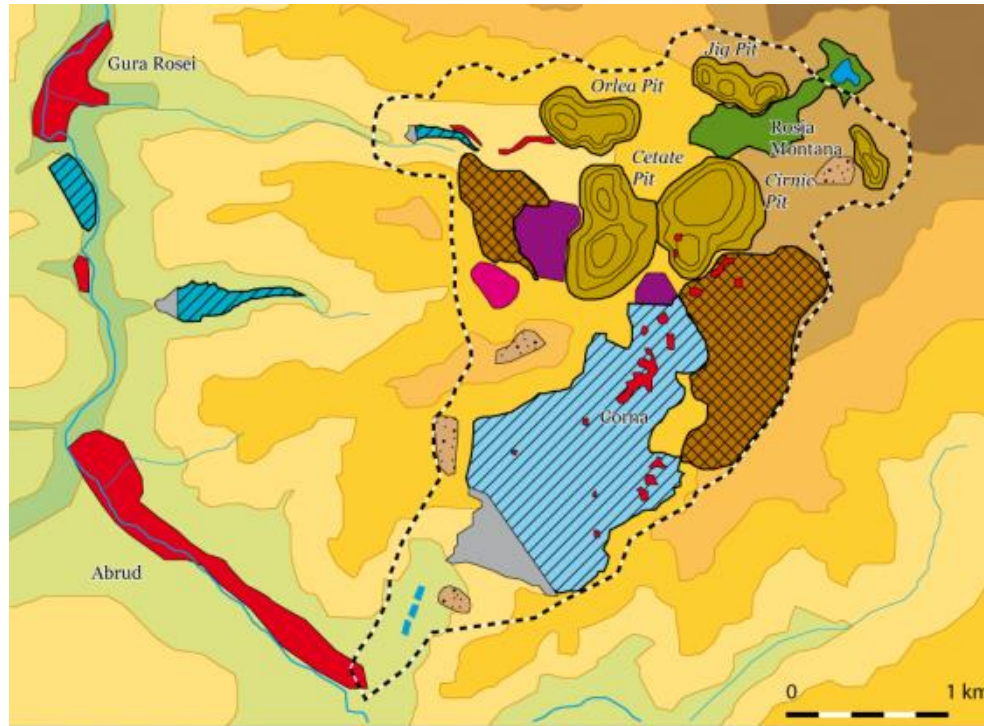


Source : Jean-Kévin Aimé Tsiba - L'exploitation minière et l'environnement au Gabon : le cas du manganèse et de l'uranium dans la région du Haut-Ogooué

Des impacts de plus en plus graves, gouvernés par des logiques économiques et financières



Des impacts de plus en plus graves, gouvernés par des logiques économiques et financières



Anciens sites miniers de Rosia Montana
[ISF SystExt – 2016 - cc]



M. Deshaies



Des impacts de plus en plus graves, gouvernés par des logiques économiques et financières

Mining Mountains

How mountaintop mining is done and its effects on the environment:

THE PROCESS

1 Trees are clear-cut, and explosives are used to loosen the rock and topsoil.

2 Huge shovels dig into the topsoil, and trucks start hauling it away.

3 A dragline digs into the rock to expose the coal.

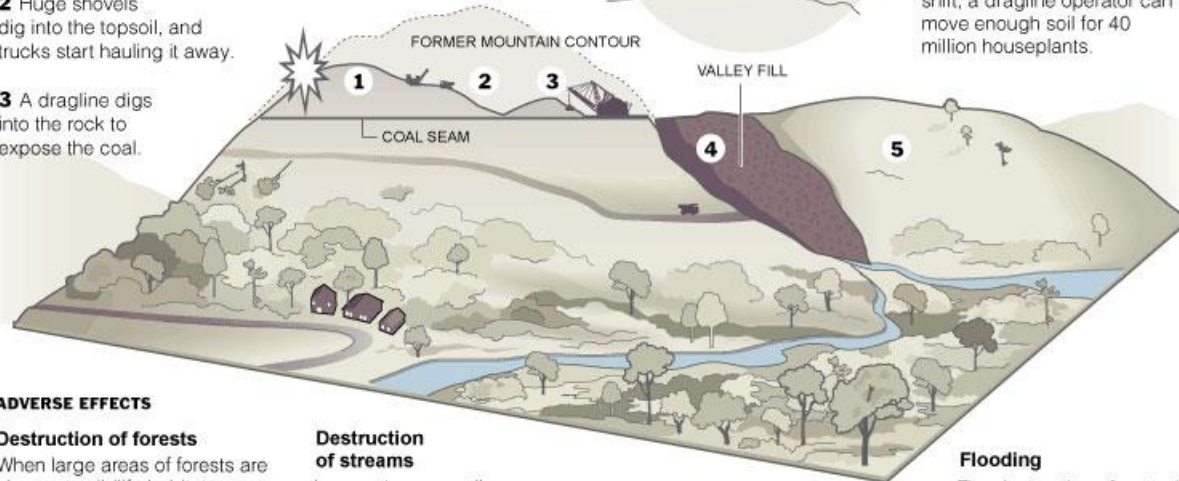
4 The draglines and 250-ton trucks dump the topsoil and rock into areas called valley fills.

5 Coal companies are supposed to reclaim land, but native trees have trouble growing on disturbed topsoil.



Giant earthmovers

In the last decade, the scope and scale of mountaintop mining has escalated with dragline use. These machines can weigh up to 8 million pounds and stand as tall as a 20-story building. In an 8-hour shift, a dragline operator can move enough soil for 40 million houseplants.



ADVERSE EFFECTS

Destruction of forests

When large areas of forests are clear-cut, wildlife habitats are destroyed. Wildlife and plantlife become more vulnerable to predatorial species.

Destruction of streams

In recent years, valley fills have buried or damaged 1,200 miles of streams.

Blasting

Explosions can cause damage to home foundations and wells.

Flooding

The destruction of natural streams and the loss of vegetation can cause flooding.

Sources: Arch Coal Inc., West Virginia Department of Environmental Protection, Ohio Valley Environmental Coalition, Natural Resources Defense Council

Allisa Nance/The New York Times



Mines de charbon en Virginie, Etats-Unis
[Earthworks - 2008 - cc]

Questions et poursuite des échanges

- Comment accédez-vous à des informations techniques ?

How do you access to technical information?

- Comment comprenez-vous ces informations ?

How do you understand this information?

- Quels usages en faites vous ?

How do you use this information?

